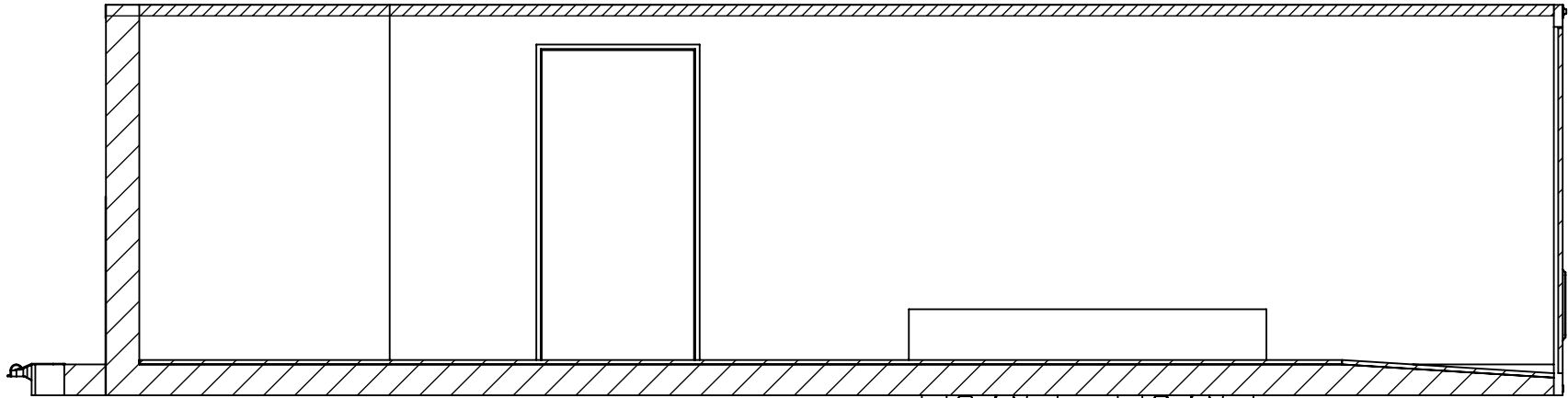


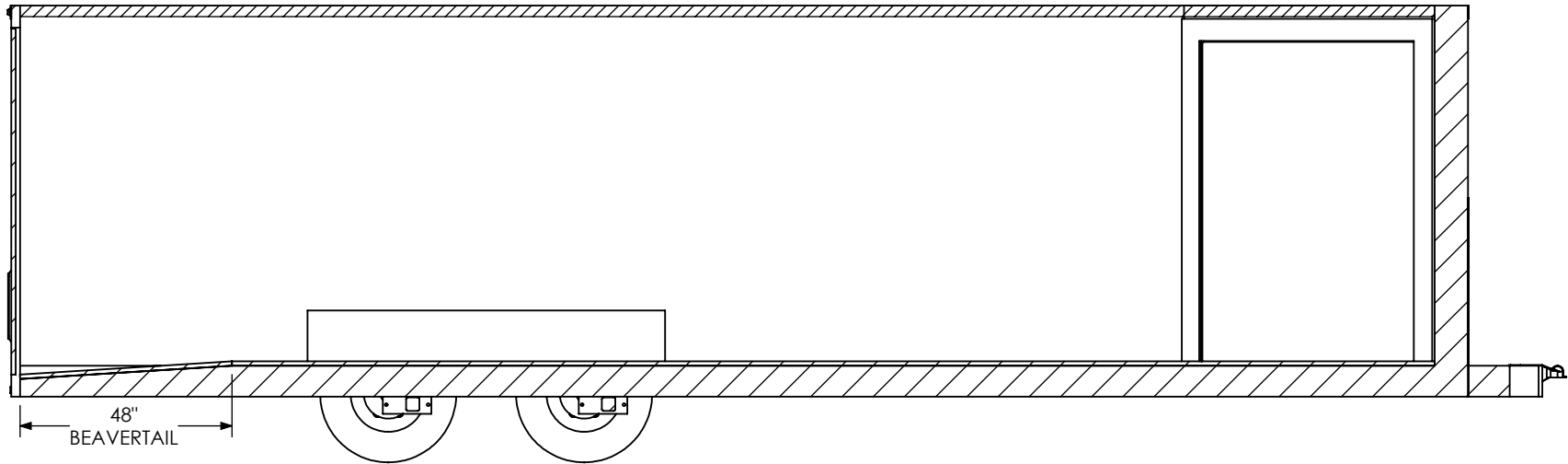
GRID = 12" x 12"

**PROPRIETARY AND CONFIDENTIAL**  
 THE INFORMATION CONTAINED IN THIS DRAWING IS THE  
 SOLE PROPERTY OF INTECH TRAILERS. ANY REPRODUCTION  
 IN PART OR AS A WHOLE WITHOUT THE WRITTEN PERMISSION  
 OF INTECH TRAILERS IS PROHIBITED.

	NAME	DATE	<b><i>inTech Trailers</i></b>	
DRAWN	NJM	6/1/16	<b>TEMPLATE            WBTA8.5x22+6TA            FLOORPLAN</b>	
CHECKED				
ENG APPR.				
<small>ALL DIMENSIONS ARE IN INCHES            AND ARE NOMINAL. DIMENSIONS            ON ACTUAL TRAILER MAY VARY            FROM WHAT IS SHOWN ON PRINT            BASED ON ACTUAL FRAMING AND            TRAILER STRUCTURE. UNLESS            NOTED AS CRITICAL</small>			DWG. NO. WBTA8.5+6TA	REV. A
			SCALE: 1:40	SHEET 1 OF 4



INTERIOR CURB SIDE

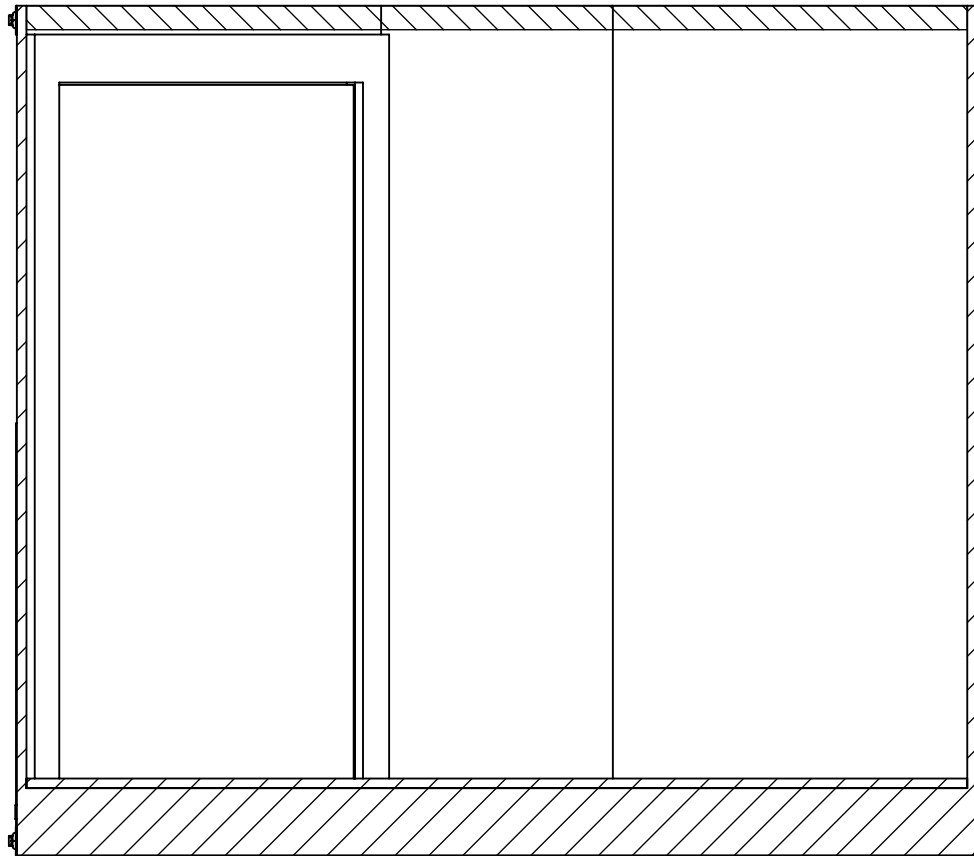


INTERIOR ROAD SIDE

STANDARD:  
 - INTERIOR HEIGHT - 78"  
 - ENTRANCE DOOR - 36"

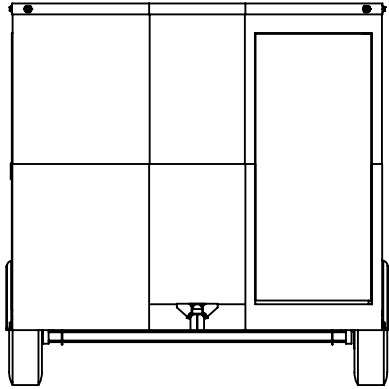
**PROPRIETARY AND CONFIDENTIAL**  
 THE INFORMATION CONTAINED IN THIS DRAWING IS THE SOLE PROPERTY OF INTECH TRAILERS. ANY REPRODUCTION IN PART OR AS A WHOLE WITHOUT THE WRITTEN PERMISSION OF INTECH TRAILERS IS PROHIBITED.

	NAME	DATE	<b>inTech Trailers</b>  TEMPLATE WBTA8.5x22+6TA INTERIOR SIDES	
DRAWN	NJM	6/1/16		
CHECKED				
ENG APPR.				
ALL DIMENSIONS ARE IN INCHES AND ARE NOMINAL. DIMENSIONS ON ACTUAL TRAILER MAY VARY FROM WHAT IS SHOWN ON PRINT BASED ON ACTUAL FRAMING AND TRAILER STRUCTURE. UNLESS NOTED AS CRITICAL.			DWG. NO. WBTA8.5+6TA	REV. A
			SCALE: 1:40	SHEET 2 OF 4

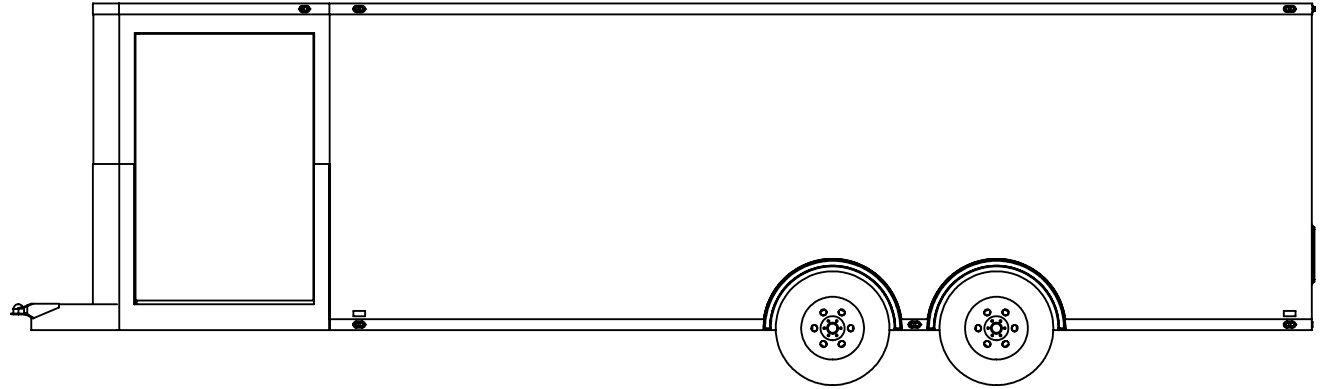


INTERIOR FRONT

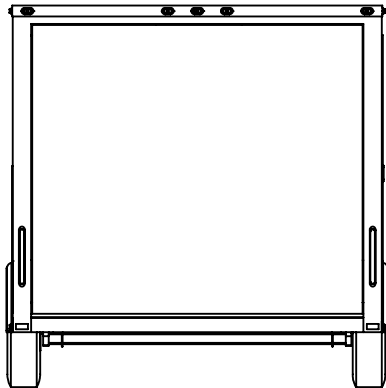
	NAME	DATE	<b><i>inTech Trailers</i></b>  TEMPLATE WBTA8.5x22+6TA INTERIOR FRONT	
DRAWN	NJM	6/1/16		
CHECKED				
ENG APPR.				
<p><b>PROPRIETARY AND CONFIDENTIAL</b>          THE INFORMATION CONTAINED IN THIS DRAWING IS THE          SOLE PROPERTY OF INTECH TRAILERS. ANY REPRODUCTION          IN PART OR AS A WHOLE WITHOUT THE WRITTEN PERMISSION          OF INTECH TRAILERS IS PROHIBITED.</p>			<p>ALL DIMENSIONS ARE IN INCHES          AND ARE NOMINAL. DIMENSIONS          ON ACTUAL TRAILER MAY VARY          FROM WHAT IS SHOWN ON PRINT          BASED ON ACTUAL FRAMING AND          TRAILER STRUCTURE. UNLESS          NOTED AS CRITICAL</p>	
DWG. NO.		REV.		
WBTA8.5+6TA		A		
SCALE: 1:20			SHEET 3 OF 4	



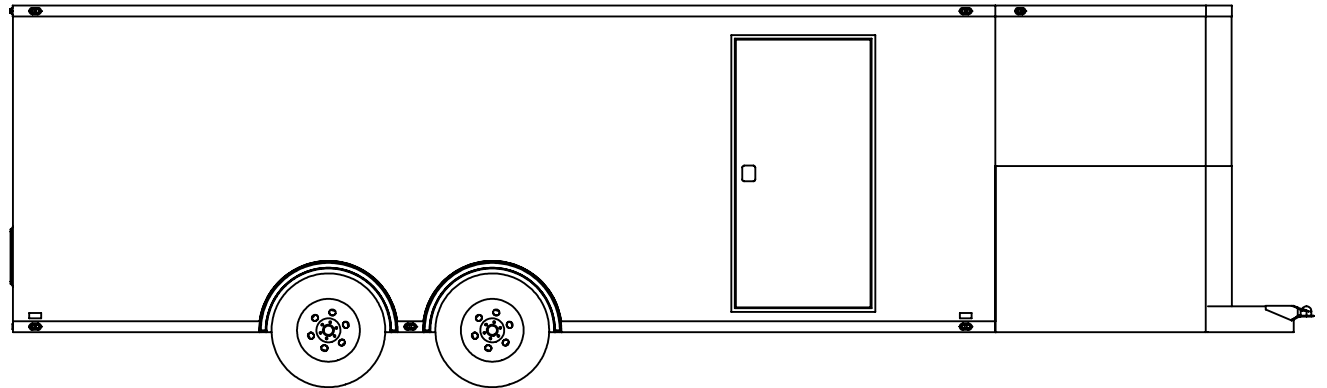
EXTERIOR FRONT  
SIDE RAMP DOOR STANDARD SIZE 58"W x 72"H



EXTERIOR ROAD SIDE



EXTERIOR REAR  
REAR RAMP DOOR STANDARD SIZE 90"W x 78"H



EXTERIOR CURB SIDE

	NAME	DATE	<b>inTech Trailers</b>  TEMPLATE WBTA8.5x22+6TA EXTERIOR	
DRAWN	NJM	6/1/16		
CHECKED				
ENG APPR.				
<p style="font-size: small;">ALL DIMENSIONS ARE IN INCHES AND ARE NOMINAL. DIMENSIONS ON ACTUAL TRAILER MAY VARY FROM WHAT IS SHOWN ON PRINT BASED ON ACTUAL FRAMING AND TRAILER STRUCTURE. UNLESS NOTED AS CRITICAL</p>			DWG. NO. WBTA8.5+6TA	REV. A
			SCALE: 1:52	SHEET 4 OF 4

**PROPRIETARY AND CONFIDENTIAL**  
THE INFORMATION CONTAINED IN THIS DRAWING IS THE SOLE PROPERTY OF INTECH TRAILERS. ANY REPRODUCTION IN PART OR AS A WHOLE WITHOUT THE WRITTEN PERMISSION OF INTECH TRAILERS IS PROHIBITED.